

Closing speeds can be adjusted to suit local conditions and requirements. With a screw driver turn the adjusting screw that projects through the floor plate or threshold, clockwise, to decrease closing speed and counterclockwise, to increase the closing speed. **FORCING THIS SCREW DOWN WILL IMPAIR ITS OPERATION.**

Spring Power Adjustments

There is no spring power adjustment. If the spring power is not adequate, a heavier uni-chek should be installed. All Uni-cheks PH67, 67, and 68 are interchangeable.



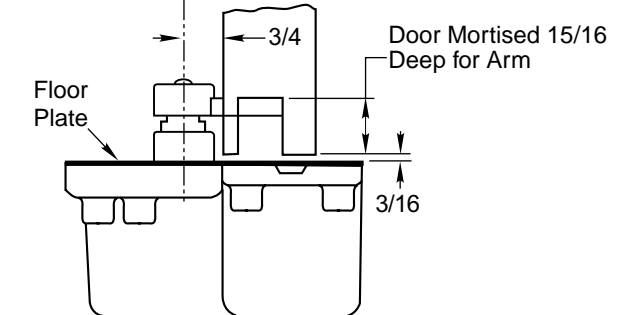
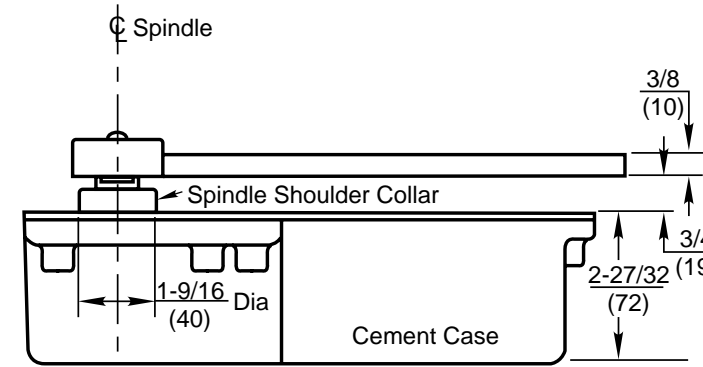
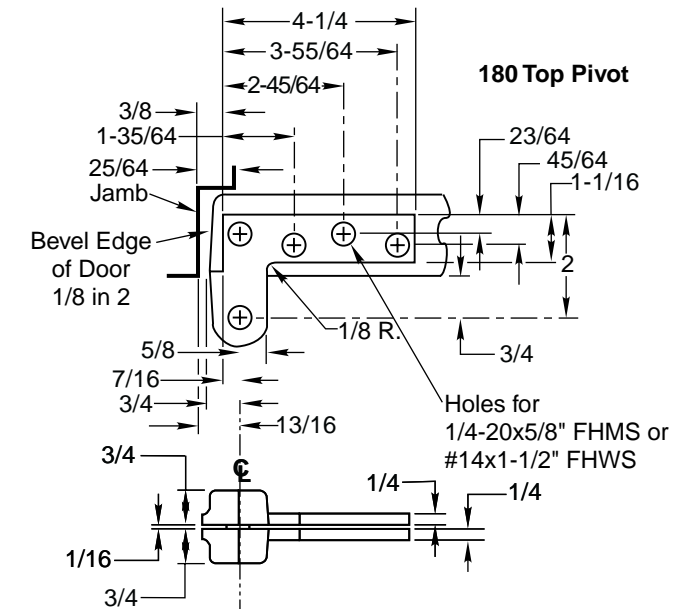
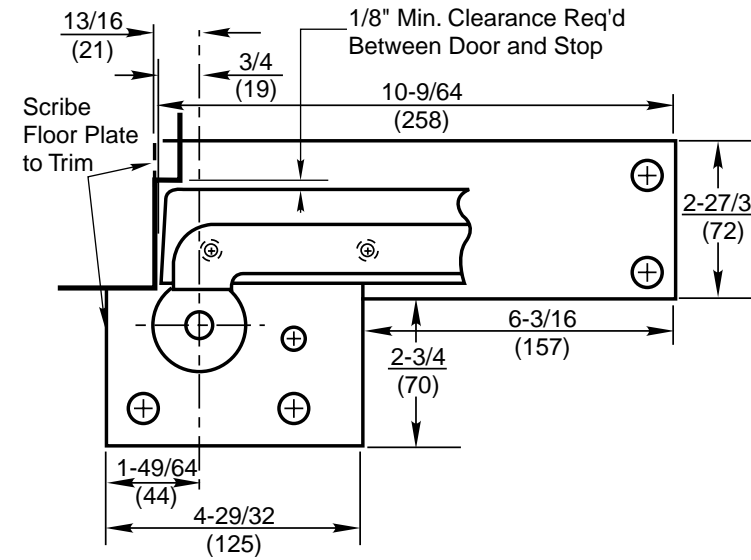
UNI-Chek Floor Closer

3/4" Offset Pivoted – Handed
180 Top Pivot – Non Handed

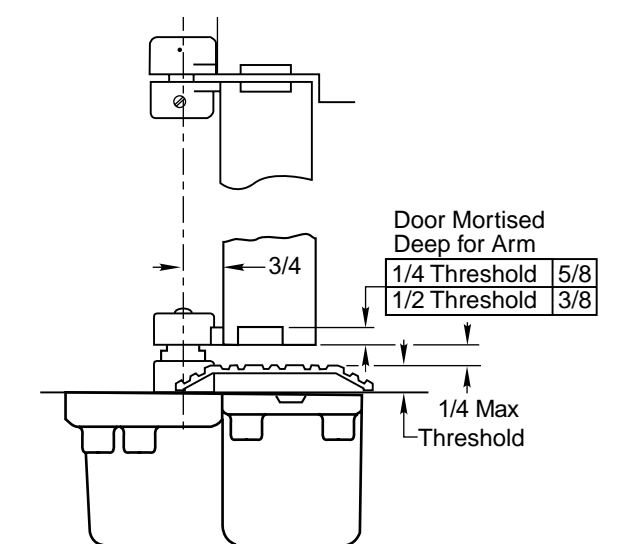
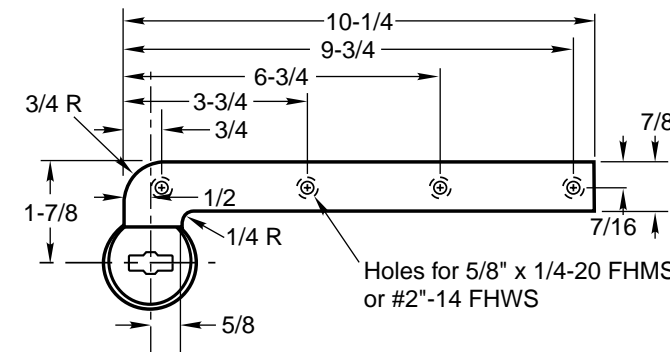
Installation Instructions

6500NHEZ (02-06)

Template

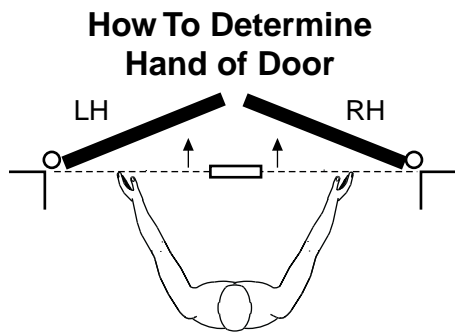


WITH FLOOR PLATE
Set Cement Case 1/16" Below Surface of Finished Floor

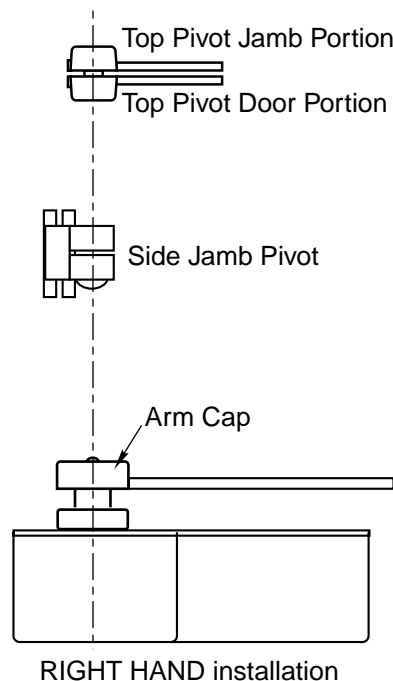


WITH THRESHOLD

Right Hand Shown
Conversion from inches to metric: inch x 25.4



Face a door swinging open away from you. If it opens to the right, it is right hand. If it opens to the left, it is left hand.

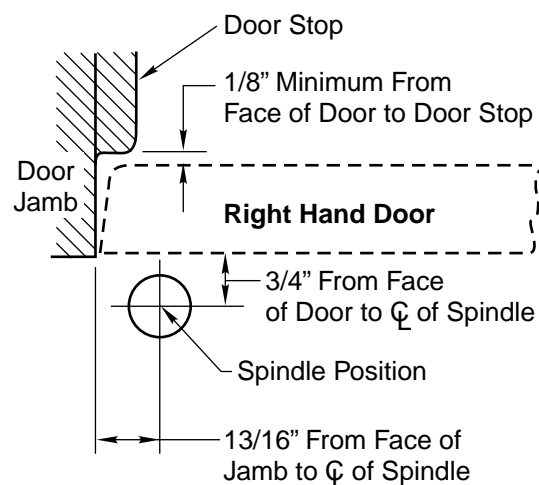


IMPORTANT:

Use plumb line to make sure that center line of top pivot pin lines up with center line of closer spindle.

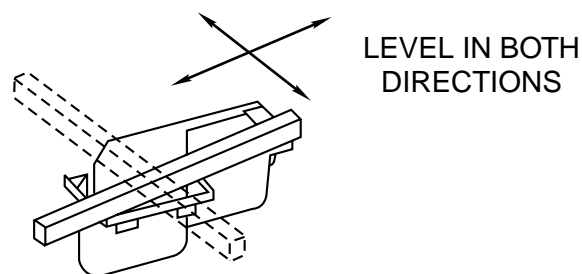
Installation Instructions

1. Locating Closer



- A. Measure 13/16" out from door jamb.
- B. Allow 1/8" minimum clearance from door stop to door face. Measure door thickness. Add 3/4".
- C. Where lines meet determines center line of closer.

2. Install Cement Case in Floor



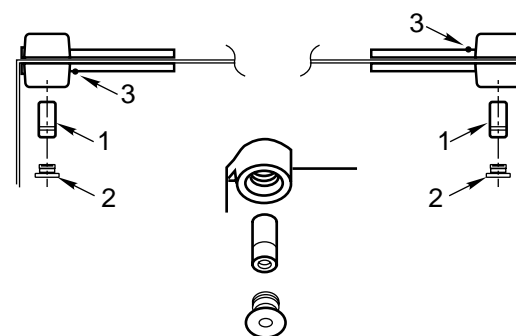
- A. Cement case is set 1/16" below floor level.
- B. Set cement case in floor and block in position.
- C. Case should be parallel with center line of door.
- D. CEMENT CASE SHOULD BE LEVEL. Place levels per Illustration.
- E. Grout in cement case with closer. Cement should not get between closer and case.

3. Install Top Pivot & Closer Arm

- A. Install top pivot in door per template.
- B. Install top pivot in frame per template.
- C. Center line of pivot should line up with center line of closer. Use plumb line as illustrated.
- D. If side jamb pivot is used, see template for intermediate pivot.

4. Hang Door

4a



- A. Close valve screw. Never force valve screw down as this will damage tip seating.
- B. Set door on closer spindle.
- C. Push item 1 "top pivot pin" into place. Attach "cap" item 2. (illus. 4a) CAP MUST BE TIGHTENED SECURELY.
- D. Put arm cap on arm, secure with cap screw furnished, and tighten securely. (For extra length spindles, see illus. 4b).
- E. Open door to 60° or more and turn valve screw counterclockwise. Door will then close.
- F. Jog door back and forth and at the same time secure cap screw tightly.