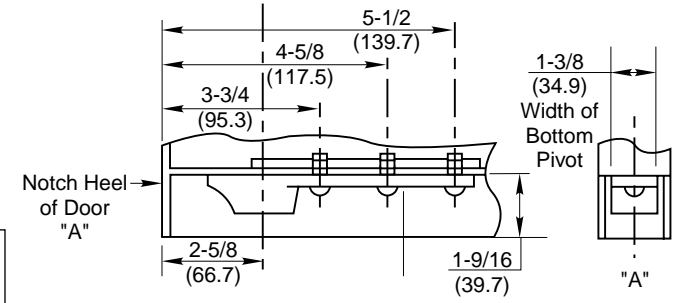
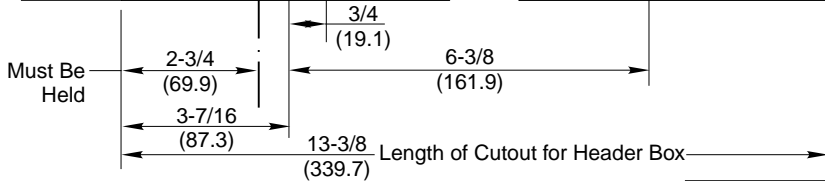
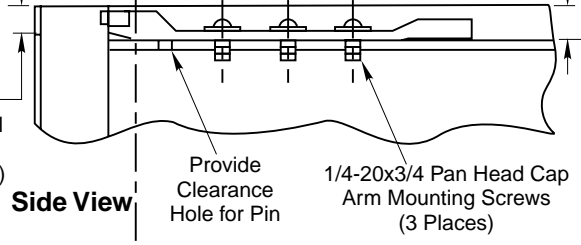
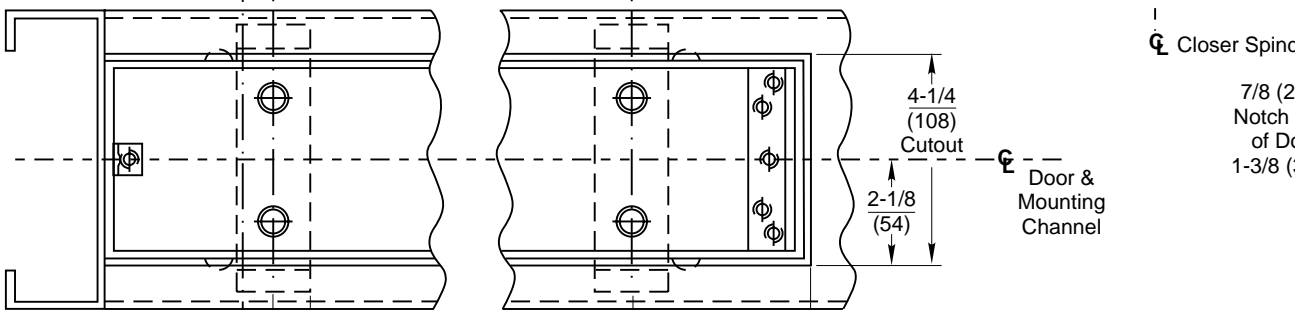
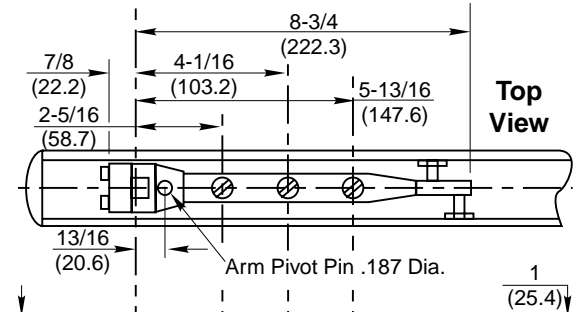
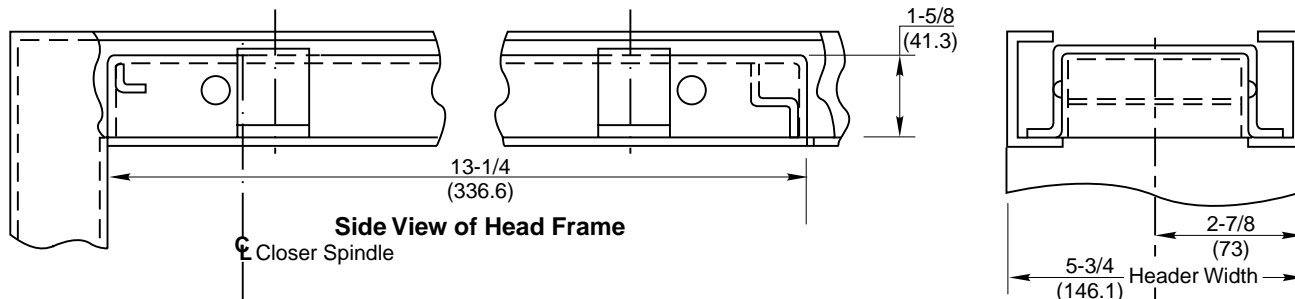
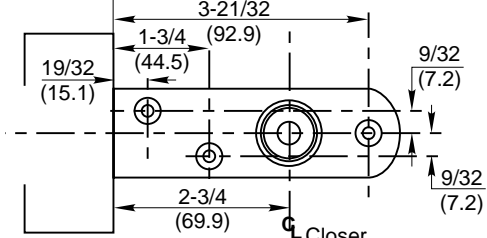


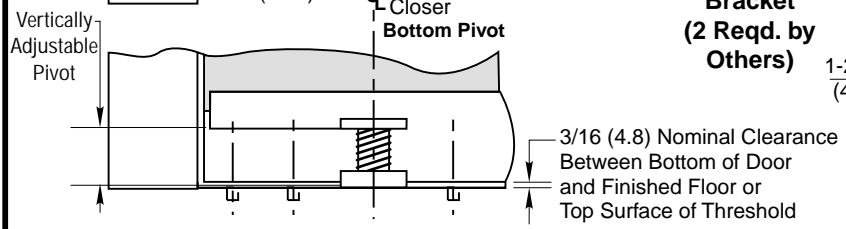
Hollow Metal Jamb Installation



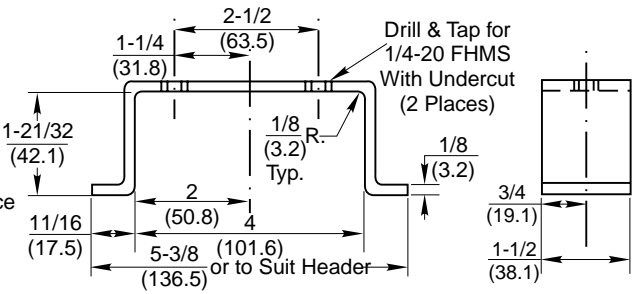
Under Side of Head Frame



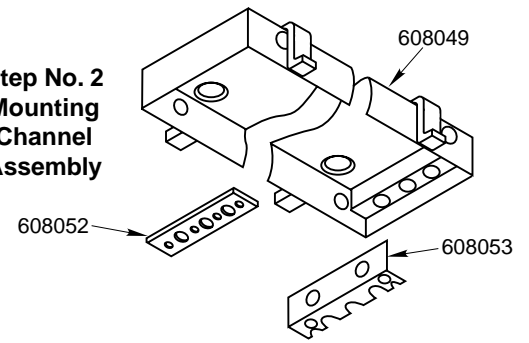
- NOTES:**
1. Do not scale drawing.
 2. 2" (50.8) x 5-1/2" (139.7) minimum width head frame.
 3. Single acting operation requires a door stop on the underside of frame.
 4. Door radius recommended is 2-5/8" (66.7).
 5. All dimensions given in inches (mm).



Step No. 1 Bracket (2 Req'd. by Others)



Step No. 2 Mounting Channel Assembly



**M608 Series
 Overhead Concealed Door Closer
 Center Pivoted for Metal Doors and Frames**

RIXSON™
 Rixson Specialty Door Controls
 www.rixson.com
 TEMPLATE NUMBER **OC60435** DATE **1-06**