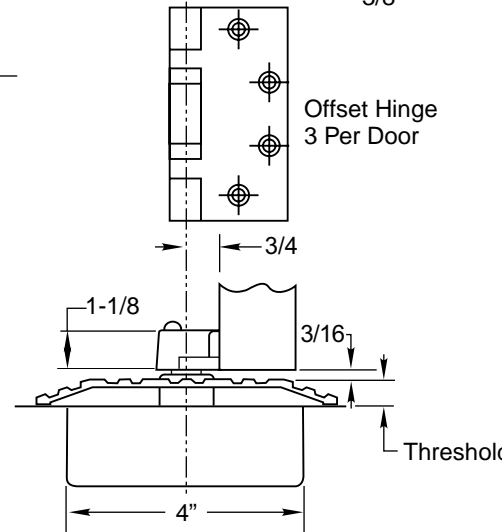
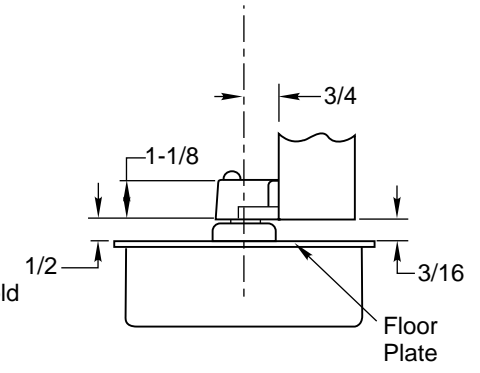


For Bevel Edge Doors Only



WITH THRESHOLD
Set Cement Case Flush with Finished Floor



WITH FLOOR PLATE
Set Cement Case Flush with Finished Floor

Notes:

1. Do not scale drawing.
2. All dimensions given in inches.
3. Right Hand Shown.
4. Rixson design thresholds available on request.
5. Do not remove grind plate until closer is installed.
6. No built-in dead stop. External stop required, by others.

HM51 Floor Closer
3/4" Offset
For Use on 1-3/4" Doors Only

RIXSON™
Rixson Specialty Door Controls
www.rixson.com
TEMPLATE NUMBER **OS10210** DATE **1-05**